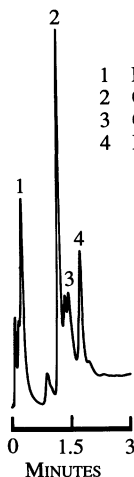


# EASILY PURIFY PROTEINS WITH PRP-X500 COLUMNS



- 1 MYOGLOBIN 0.2mg
- 2 CONALBUMIN 0.2mg
- 3 OVALBUMIN 0.2mg
- 4 BSA 0.2mg

PRP-X500 SUPERFICIALLY POROUS ANION EXCHANGE COLUMNS COMBINE THE BEST OF POROUS AND NON-POROUS PACKINGS

**HIGH CAPACITY**  
0.2mg PER RUN FOR EACH SAMPLE COMPONENT

**GOOD RECOVERY**  
PROTEIN RECOVERY IS THE SAME AS NON-POROUS SUPPORTS

**FAST SEPARATIONS**  
ANALYZE FOUR PROTEINS BY ANION EXCHANGE IN 3 MINUTES

**FOR MORE INFORMATION ABOUT PRP-X500 PROTEIN ANALYSIS COLUMNS CALL (800) 648-5950 OR CIRCLE THE READER SERVICE CARD.**

**HAMILTON**  
THE MEASURE OF EXCELLENCE.

HAMILTON COMPANY  
P.O. BOX 10030  
RENO, NEVADA 89520-0012  
800-648-5950 OR 702-786-7077

production from background (2). Subsequently, we applied the method to data that had been processed and corrected. The results of that work were presented in two CDF internal reports that we three coauthored. Although we individually contributed our expertise to the analysis, this analysis was a synergistic and collaborative process, by no means the exclusive effort of any one of us.

As far as the question of access to data is concerned, we were quite open with CDF. It was known from our first presentation that our work involved some of their corrected data. However, there was never any intention to publish that data without CDF approval. For several months there were no objections to our collaboration; indeed, some CDF members encouraged us to continue. By late April however the mood at CDF changed markedly, as the article notes, and CDF decided not to include us nonmembers in their collaboration.

**Gary R. Goldstein**

*Department of Physics and Astronomy,  
Tufts University,  
Medford, MA 02155*

## REFERENCES

1. G. Goldstein and R. Dalitz, *Phys. Rev. D* **45**, 1531 (1992).

2. G. Goldstein, K. Sliwa, R. Dalitz, in preparation.

## Old Words from the Wise

In 1971, in an obscure journal (*Science*, 14 May 1971, p. 674), I published a book review with the sentence: "Physics-envy is the curse of biology." I made up that sentence myself. Imagine my surprise when I read in the same journal in 1992 (Random Samples, 1 May, p. 611) that "physics envy" is attributed to chemist Paul Bickart of the Environmental Protection Agency in a recent book by Jack Hitt, *In a Word*. I challenge Bickart and Hitt to establish that Bickart, or anyone else, originated the phrase before me. Am I doomed to be another victim of Stigler's Law? (Stigler's Law asserts that a discovery is named after the last person to discover it, because once a discovery has been named, no one else claims it as a discovery. Stigler's Law was discovered many times before Stigler named it.)

**Joel E. Cohen**

*Laboratory of Populations,  
Rockefeller University,  
New York, NY 10021-6399*

## REQUEST FOR PROPOSALS

In 1981-82, Heptachlor epoxide contaminated a considerable part of Hawaii's milk supply. This has led to concern that adverse health effects might result from consumption of contaminated dairy products, particularly among children. Studies to identify potential disease problems, and to develop measures to prevent or ameliorate them are sought and will be supported.

### Research Areas of Interest

Although a wide range will be considered, primary focus will be devoted to six research areas likely to lead to practical applications in public health and clinical care.

1. Follow-up of those persons tested for heptachlor epoxide in Hawaii.
2. Case control studies of conditions that might be caused by heptachlor, with residue analyses of cases and controls, such as heptachlor epoxide, fat levels and breast cancer.
3. Baseline studies of child development, behavior, school function and socialization.
4. Preclinical studies of agents that might assist the removal of heptachlor.
5. Studies on the clinical management of persons exposed to heptachlor, both medical and psycho-social.
6. Metabolism of heptachlor and related substances. Biological effects of heptachlor and related substances in model systems (subcellular, tissue culture or experimental animals).

Coordination among different research projects will be encouraged where possible to avoid duplication of effort and to facilitate access to material and populations. Projects up to two years duration will be considered for funding.

*Applications:* Submit a *letter of intent* of less than 500 words to the Foundation for review by the Scientific Advisory Council. The Scientific Advisory Council of the Hawaii Heptachlor Health Effects Research Program is chaired by Dr. David P. Rall. Letters of intent received by January 10, 1993 will be reviewed. Submitters will be notified by March 20, 1993 on whether or not to submit full applications. Send all letters of intent to the address below. Copies of the Foundation's research policies are available upon request to the Foundation office.

**HAWAII HEPTACHLOR RESEARCH & EDUCATION FOUNDATION**  
**1188 Bishop Street, Suite 2308**  
**Honolulu, Hawaii 96813**